

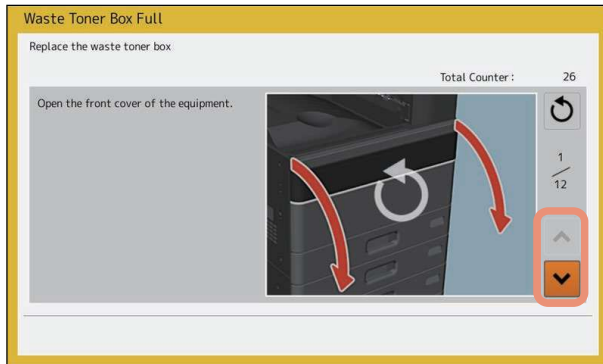


Replacing the Waste Toner Box

(e-STUDIO6525AC Series and e-STUDIO5528A/6528A)

When the waste toner box becomes full, the symbol for replacement of the waste toner box blinks and the message “Dispose of used toner” appears. Replace the waste toner box following the procedure below.

The guidance is displayed on the touch panel. Press  or  to scroll the pages.

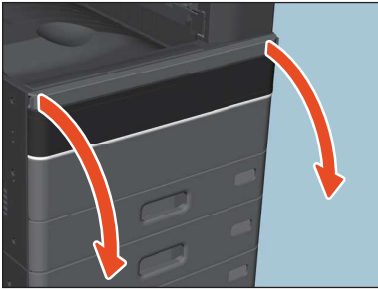


WARNING

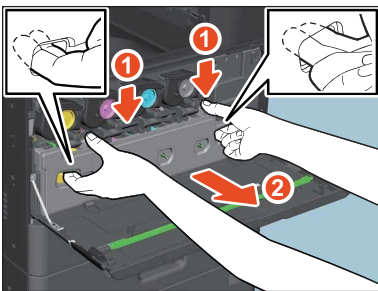
Never attempt to incinerate waste toner boxes.

Dispose of used toner cartridges and waste toner boxes in accordance with local regulations.

1 Open the front cover of the equipment.



2 Put your fingers in the waste toner box front grooves and take it out toward you pushing down the top latch.

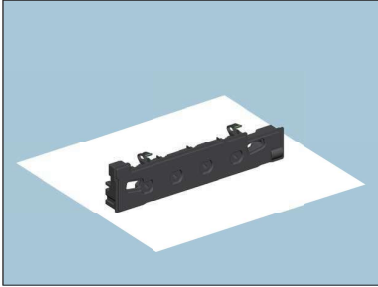


WARNING

Never attempt to incinerate waste toner boxes.

Dispose of used toner cartridges and waste toner boxes in accordance with local regulations.

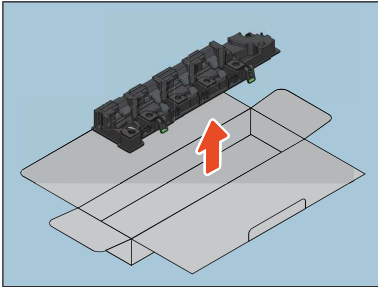
3 Place the waste toner box on a large sheet so as not to dirty the floor.



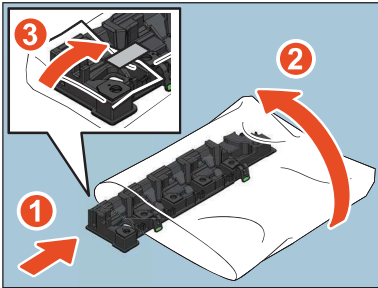
Note

Do not place the waste toner box with its toner collecting holes face down.
The waste toner may spill out from the box's toner collecting holes.


4 Take the new waste toner box out of the carton.




5 Put the used waste toner box in the plastic bag and seal it with adhesive tape.

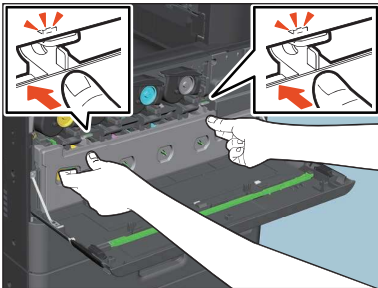


6 Clean the LED print head (for e-STUDIO2020AC/2520AC) or the slit glass (except for e-STUDIO2020AC/2520AC).

e-STUDIO2020AC/2520AC: Perform steps 5 to 11 on  P.85 “The Main Chargers and LED Print Heads (e-STUDIO2020AC/2520AC)”.

Except for e-STUDIO2020AC/2520AC: Perform steps 5 to 9 on  P.89 “The Main Chargers and Slit Glass (e-STUDIO2525AC/3025AC/3525AC/4525AC/5525AC/6525AC and e-STUDIO5528A/6528A)”.

7 Push the new waste toner box securely until the upper latches click.



8 Close the front cover pressing both edges.

